

Operation manual

Model: AA17089

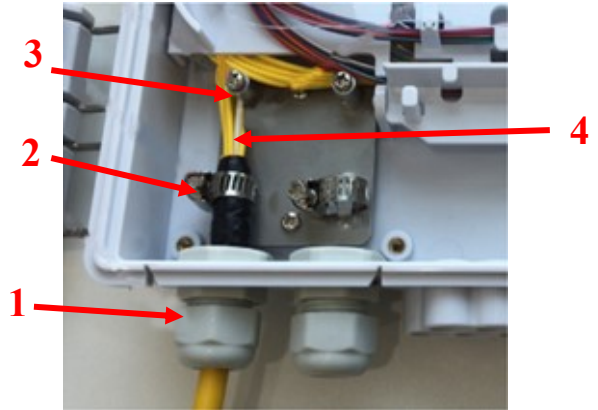
Step 1.

Open the Fiber optic terminal box. Check and prepare installation tools and accessories. To establish easy and safe installation put the box where it will be installed and measure the required length of the cable. Prepare the safe installation of the box.



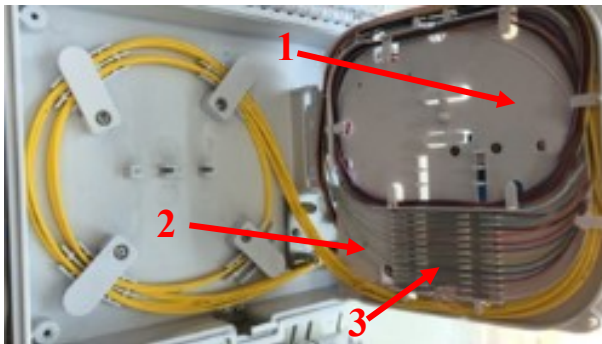
Step 2.

Strip the cable the required length, minimum 1 meter or more, to establish easy and safe installation with enough buffer size. Fix the cable strength member (4) on the column (3), use cable gland (1) and stabilize with cable fixing part (2) inside the box.



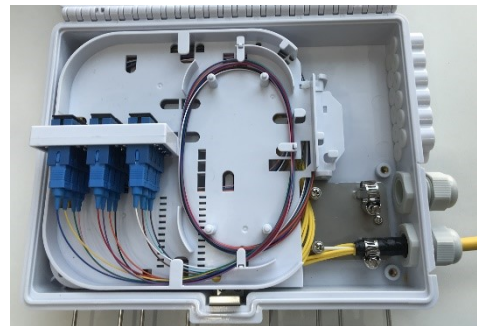
Step 3.

Coil the cable inside the bottom box and enter the stripped cable into the splicing tray (1). Splice the stripped cable with the pigtails (2). Put on the fiber protect sleeves, then in the splice tray (3).



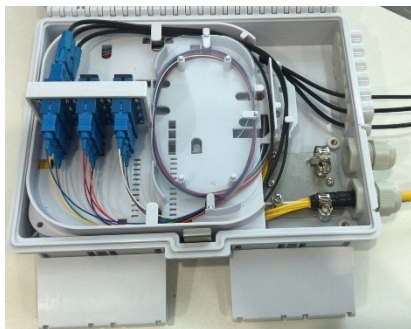
Step 4.

Pass the spliced pigtails to the upper side of the tray and connect them with the adapters. Coil the remaining cable in the puffers.



Step 5.

Connect the pigtails with drop cable connector after finishing the basic light test or the measuring of all fibers.



Step 6.

Close the box after finishing all cable connections and then put it on the designated place.

